

We envision a Rhode Island where everyone ages strong.

Today, many older adults struggle financially, which can negatively affect their health. We focus on helping people meet their needs and live well.

## Connect

We offer a wide range of programs and opportunities that promote health and help people afford certain basic needs.

- At-home companionship for those age 55 or older with limited mobility
- Chronic-disease programming
- Family supports, including respite care
- Community and home-delivered meals
- Free healthcare insurance counseling
- In-home and day-care cost assistance
- Free and reduced legal services
- Rx cost and transportation assistance
- Mental health/substance use support
- Senior & community center programs

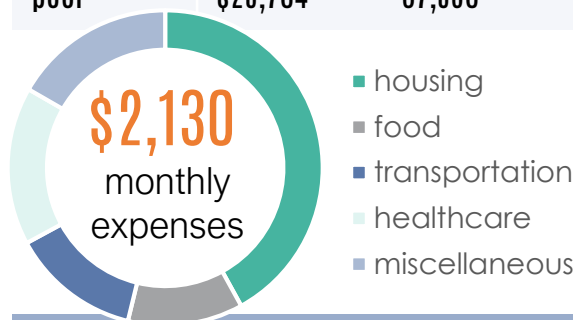
## Protect

Too often older adults and people living with disabilities become victims of financial and/or physical abuse. We work to ensure people are safe, whether they live in a long-term care facility or in their own home. All Rhode Islanders are mandatory reporters; to report suspected abuse or exploitation of a person age 60 or older, call us at 401.462.0555.

- Elder protective services
- Guardianship assistance
- Long-term care ombudsman support
- Medicare fraud protection assistance

### Living Expenses vs. Older Adults' Income

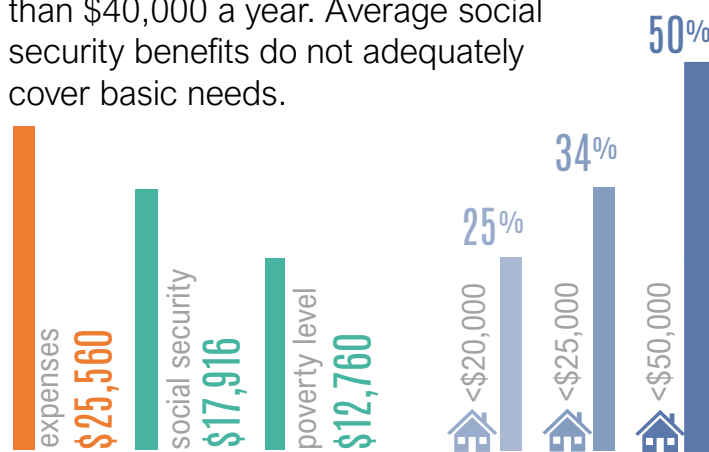
Health (single)	Owner (no mortgage)	Owner (w/ mortgage)	Renter
excellent	\$22,404	34,326	24,480
good	\$23,484	35,316	25,560
poor	\$25,764	37,596	27,840



Health (couple)	Owner (no mortgage)	Owner (w/ mortgage)	Renter
Excellent	\$31,824	43,656	33,900
Good	\$33,984	45,816	36,060
poor	\$38,544	50,376	40,620

The Elder Index™ 2019. Boston, MA: Gerontology Institute, UMass Boston.

Half of 65+ R.I. households live on less than \$40,000 a year. Average social security benefits do not adequately cover basic needs.



The average annual social security benefit for a retiree is \$17,916. Federal poverty in 2020 is \$12,760 (single), \$17,240 (couple). Data sources: U.S. Social Security Administration Annual Statistical Supplement, 2018. U.S. Census Bureau, ACS Table B19037 Age of Householder by Household Income in the past 12 months 2013-2017.